

The clear benefits of a tidy, professional, operational grade cabinet

1. Operationally sound

- New cables are managed and installed properly... Old or partially broken cables are removed from the network,
- Uplink cables are colour coded and immediately visible, and patched resiliently into the right points on network, which are then configured and labelled in configuration appropriately.
- User cables are a single colour and coded so that it is immediately obvious who is patched in where
- No risk to health and safety, no risk of tripping over cables and disconnecting them, damaging equipment.
- User's cables are tidy and manageable, any moves that take place are easier to carry out, any fault finding is easier to carry out, and time to resolve is reduced.

2. Security

- A messy network is an unknown network and unsecured network... Without a full audit and tidy up resulting in documentation, question marks remain of its operation, and security.
- When things go wrong, a lengthy site visit is required to find out how things are patched together and the topology of the network before actual work takes place.

3. Documented

- A finished site is documented and brought under control, giving a real world view of the hardware that exists on site, the connections within it, and a view of the patching capacity that is on sit
- This is fed into remote management software enabling us to have a confident remote view of its complete operation and availability
- Any questions from projects that arise concerning moves or the addition of equipment can be answered straight away from up to date documentation and memory.
- Any support questions can be quickly and confidently answered in the same fashion.

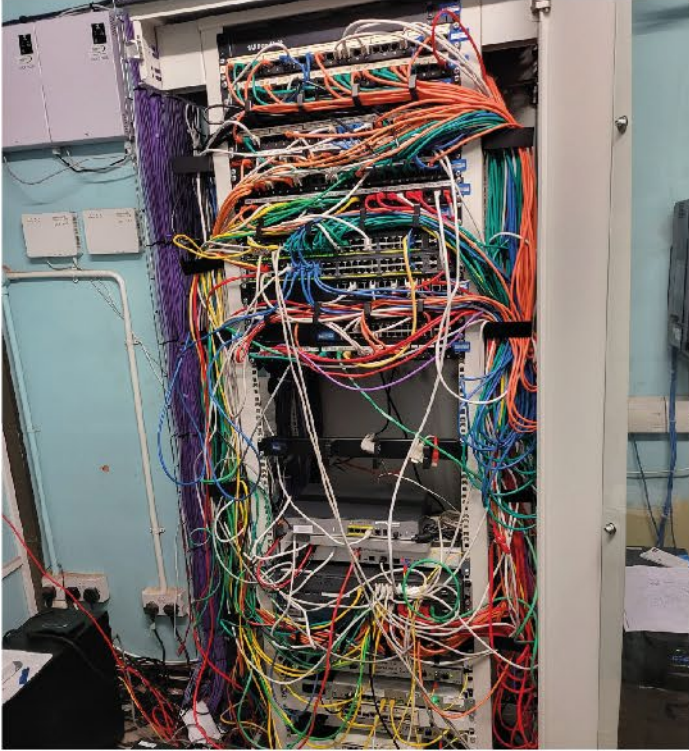
4. Presentable

- A site that is tidy, documented and brought under our control should then, by the standards of any IT professional, be easy to maintain and be cared for with pride and responsibility.
- Having a presentable cabinet reduces the risk of broken cables or connectors, which cause operational faults, this also give a better and more functional impression to the customer.
- Customers perception of IT and those that support it greatly increased.

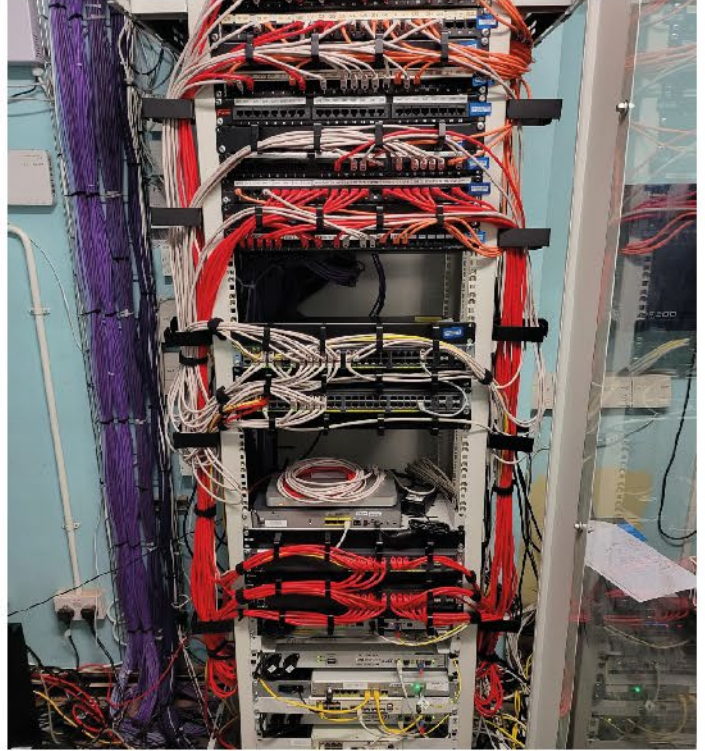
A properly configured, maintained & documented network, cabinet and site, is key to efficient operation.

Over the next few pages are just some 'before and after' examples of careless management of infrastructure and cabinets that have lead to operational issues, business risks, and health and safety concerns, which have lead to additional cost for equipment and time to put right.

BEFORE



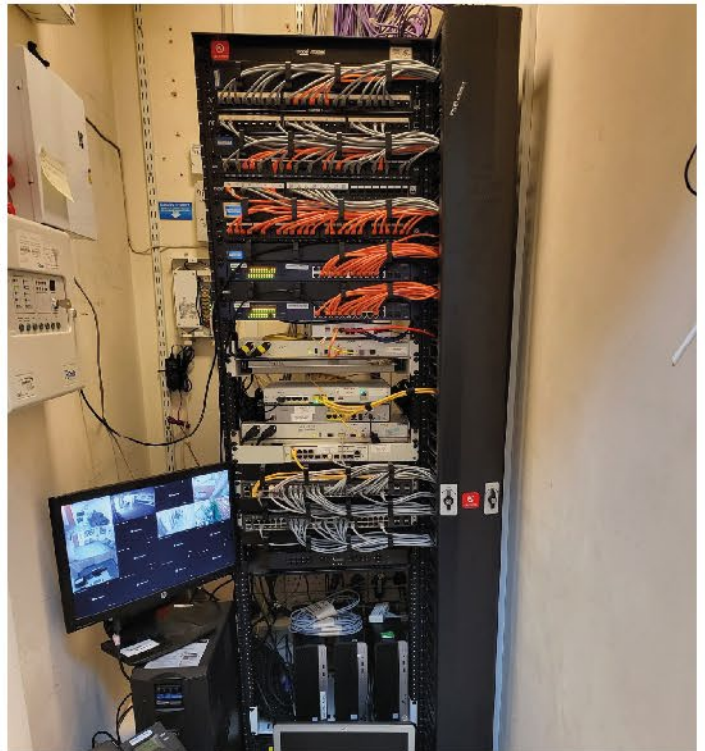
AFTER



BEFORE



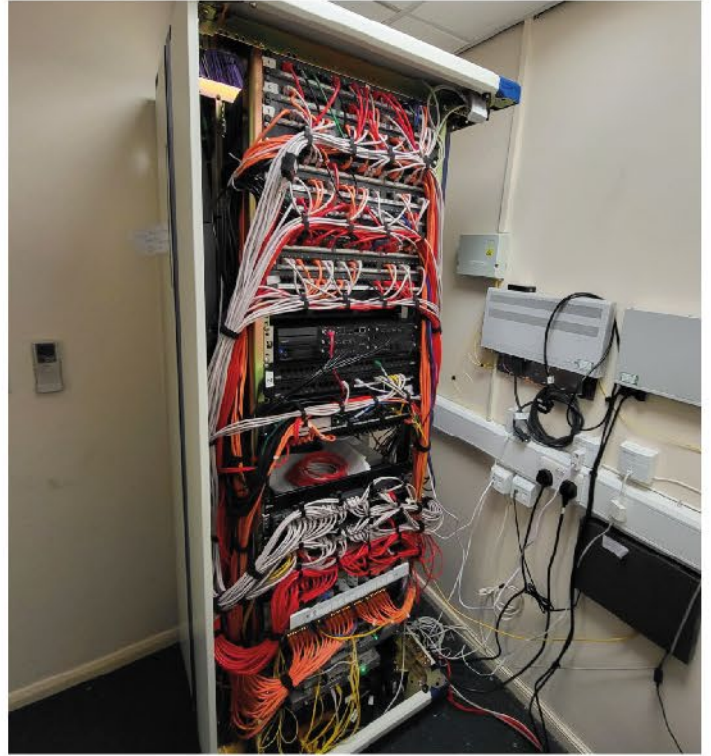
AFTER



BEFORE



AFTER



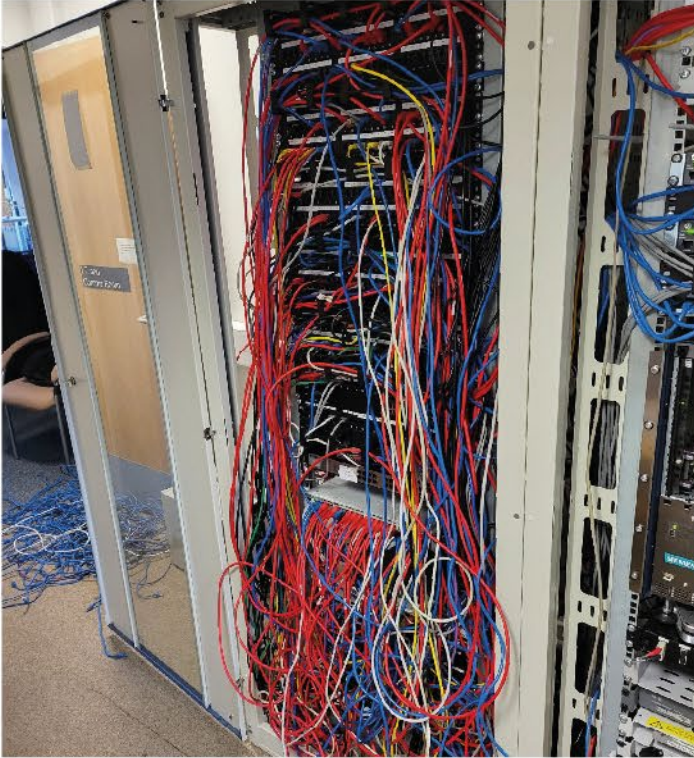
BEFORE



AFTER



BEFORE



AFTER

